

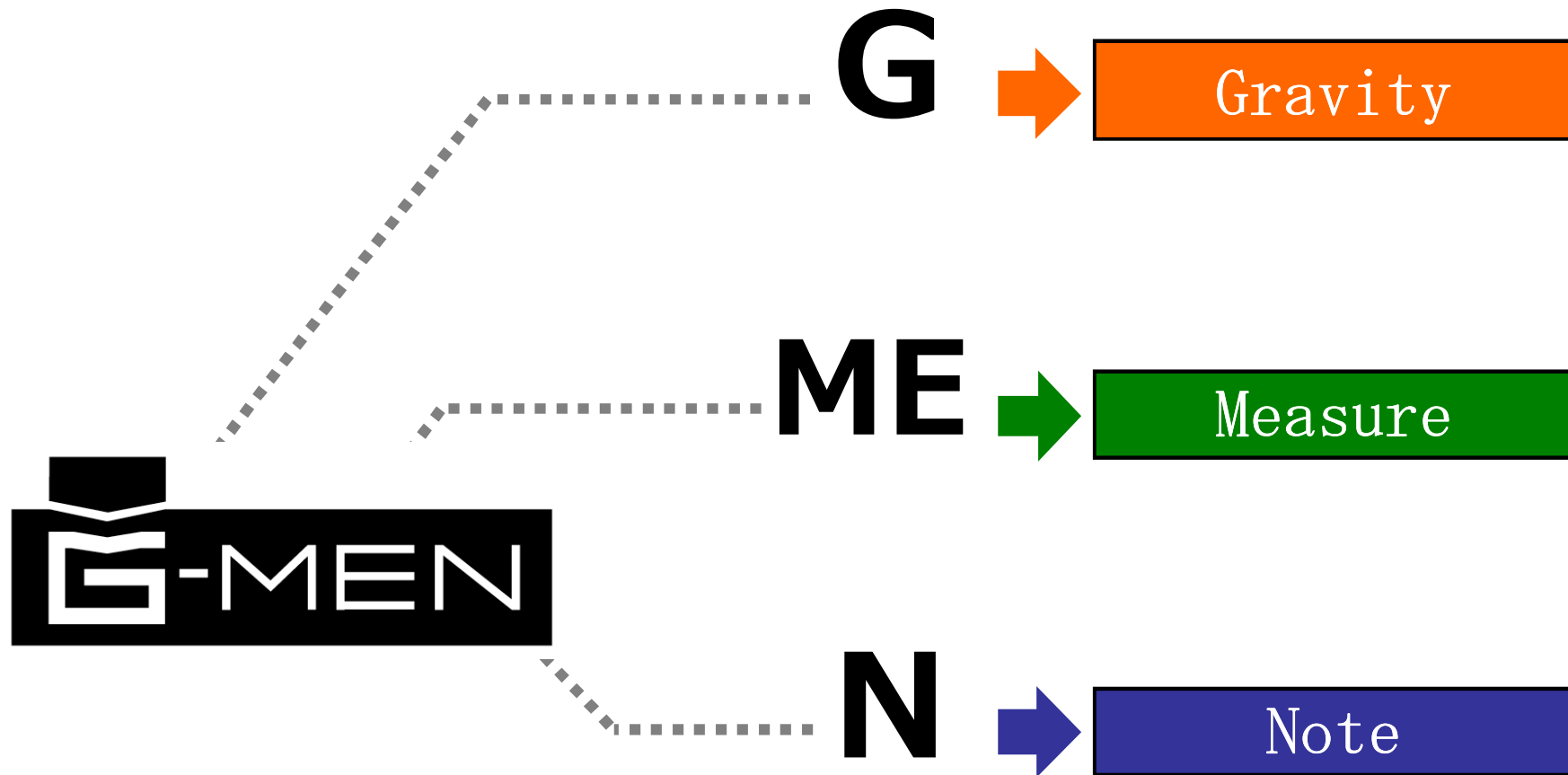
3 Dimensions Gravity Recorder

Supper small Recorder for Vibration / Acceleration



 **GRAVITY**
SHOCK RECORDER

Gravity Shock Recorder G-MEN



G-MEN Key features

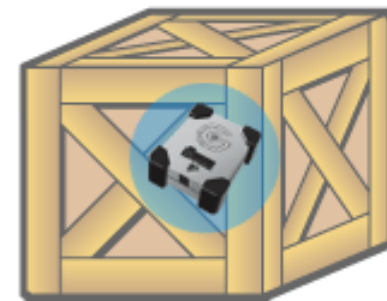
- Measure – 3-axis, shock acceleration peak values & Temperature
- Easy to use.
 - Small form factor
 - Install any place of BOX, Container and Equipments.
 - 2AA battery
 - Connection to PC via USB
 - Condition setting from PC
 - Easy to analyze captured data using window base software tool
- High quality performance
 - Variable sampling rate
 - Applicable for multi-purpose
 - High resolution
 - Reliable data



Application – Distribution Industry

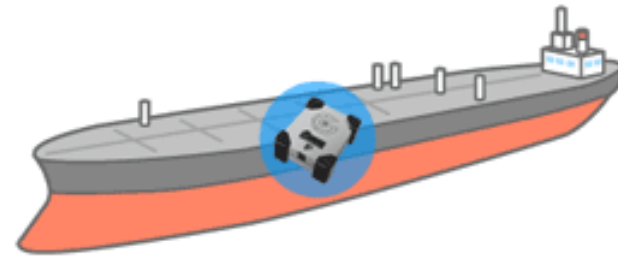


- G-MEN will enable to provide higher quality / reliability service to customer.
 - Record vibration / gravity shock from door to door.
 - Might be offered for priority customer / Fragile Items
- Measure quality / performance of service
 - Can be used for internal audit



Application

- Measure impact for Ship, Equipments etc.
 - G-MEN can measure ship movement of “front and rear” , “right and left” and “up and down” by waves during traveling.
 - G-MEN can record actual vibration while TV broadcast equipments are working. It can identify impact from vibration.



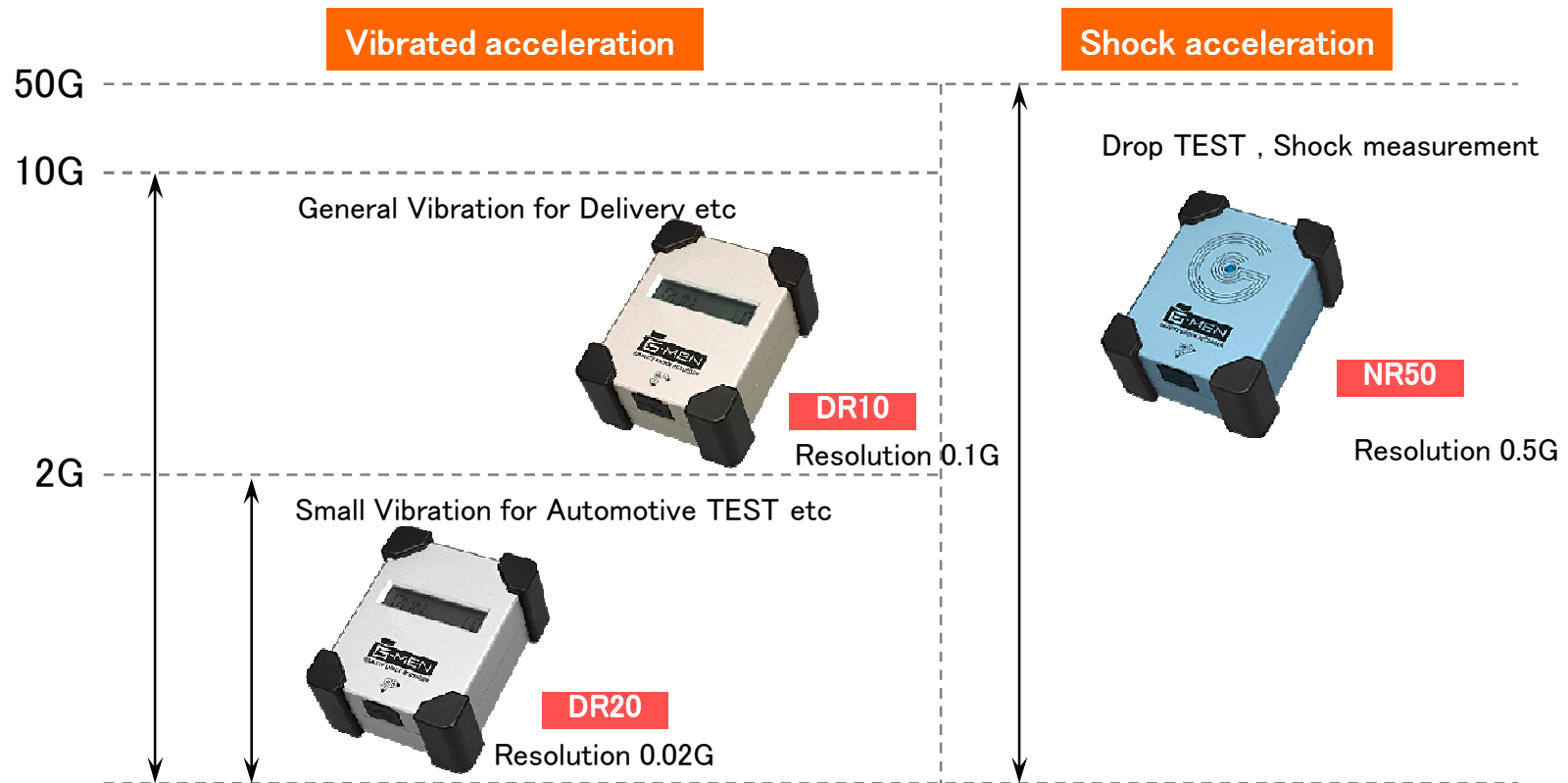
Application – safety / operation record

- G-MEN can be used for safety record for track, Taxi and Construction industry
 - G-MEN can capture operation record.
 - Also captured data can be used as safety record.



Product Line up

KEY Specification



Product Specification

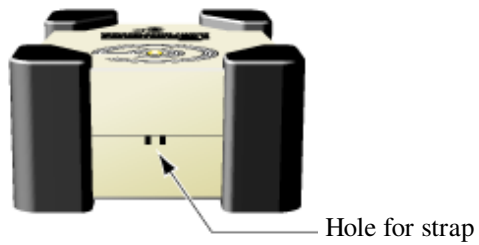


Model	G-MEN DR02	G-MEN DR10	G-MEN NR50
Items	3-axis, shock acceleration peak values + Temperature		
Acceleration sensor	Static $\pm 2G$	Static $\pm 10G$	Dynamic 50G
Min Sampling	10msec		
Resolution	0.02G	0.1G	0.5G
Accuracy	$\pm 10\%$	$\pm 10\%$	10%
Measurement interval	1sec ~ 30min		
Status Display	LCD		LCD
Memory Size	8,000 data		8,000 data
Memory Media	Flash Memory		
Connection to PC	USB (miniB)		
Battery Life time	14days ~ 60days (depends on setting)		
Power Supply	AAA $\times 3$		
Size	75(H) \times 60(W) \times 32(D) mm		
Weight	115g(Inc battery)		110g(Inc Battery)
Accessories (included)	USB cable, AAA battery1枚), PC software G-Trace Lite (CD-ROM)		

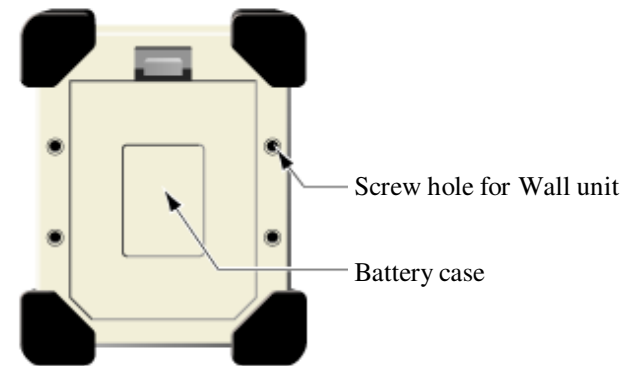


Product Overview

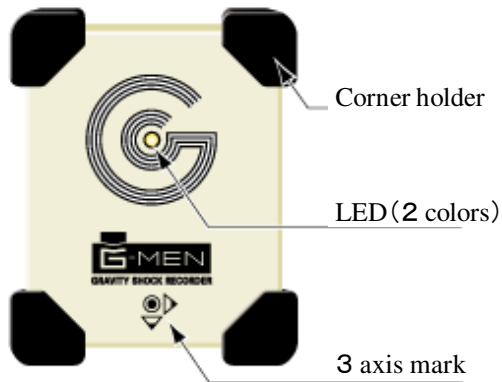
Top view



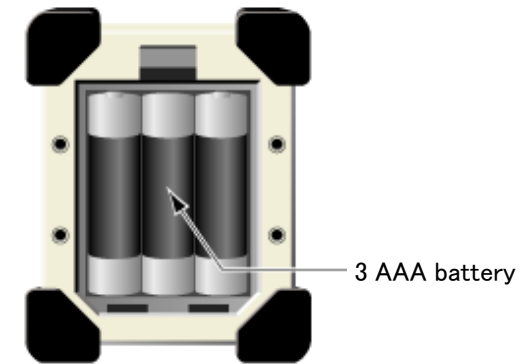
Back view



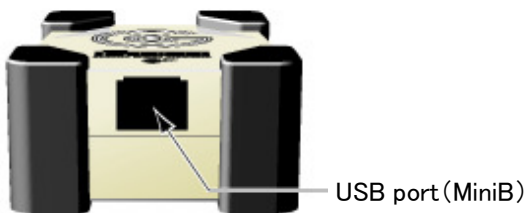
Top view



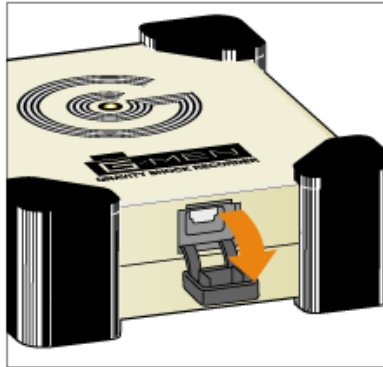
Battery case



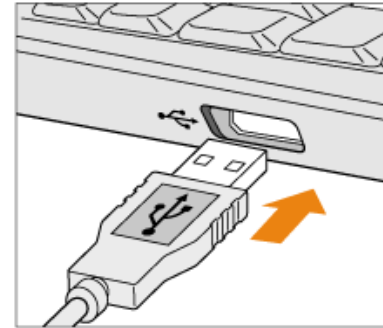
Bottom view



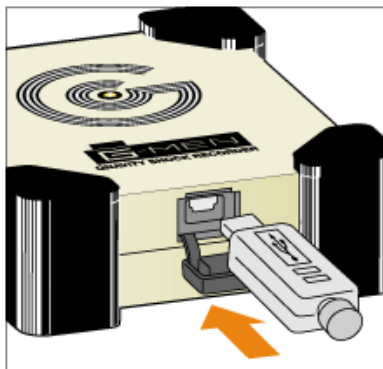
Operation Manual



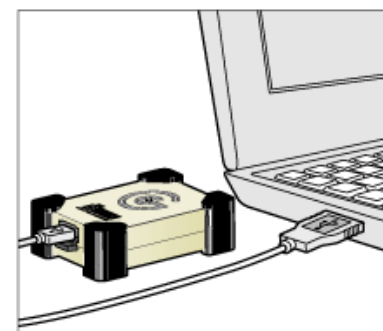
1 Open connector cap



3 Connect to PC



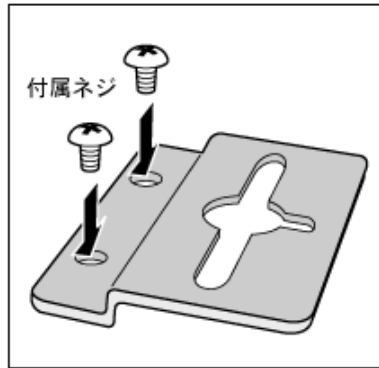
2 Connect USB cable



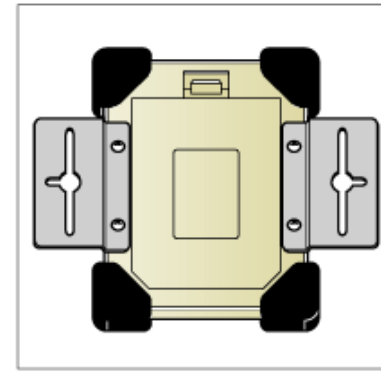
4 Connection established

G-Trace Lite has to be installed in PC.

How to install ?

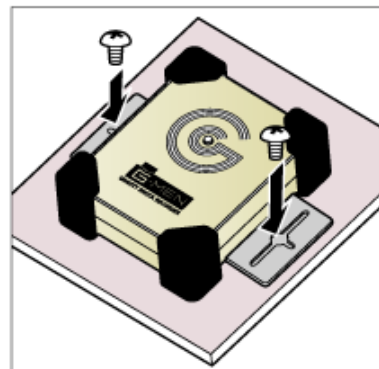


1 Wall attachment



2 Attach to G-MEN

Attach metal plate to
both side of G-MEN



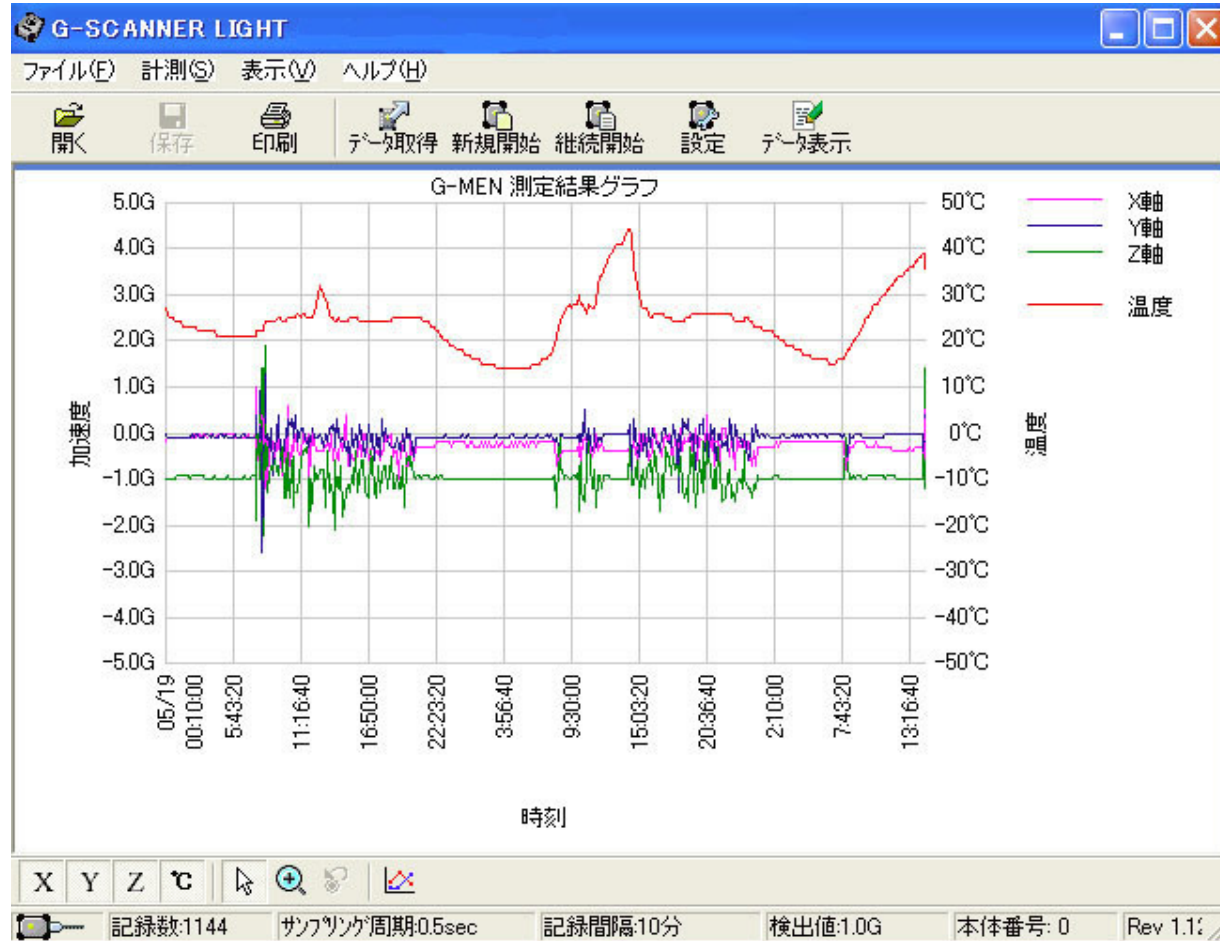
3 Attach to UTU

Attach G-MEN to UTU
(Under Test Unit)

Product Overview - Software



Menu
MENU ICON



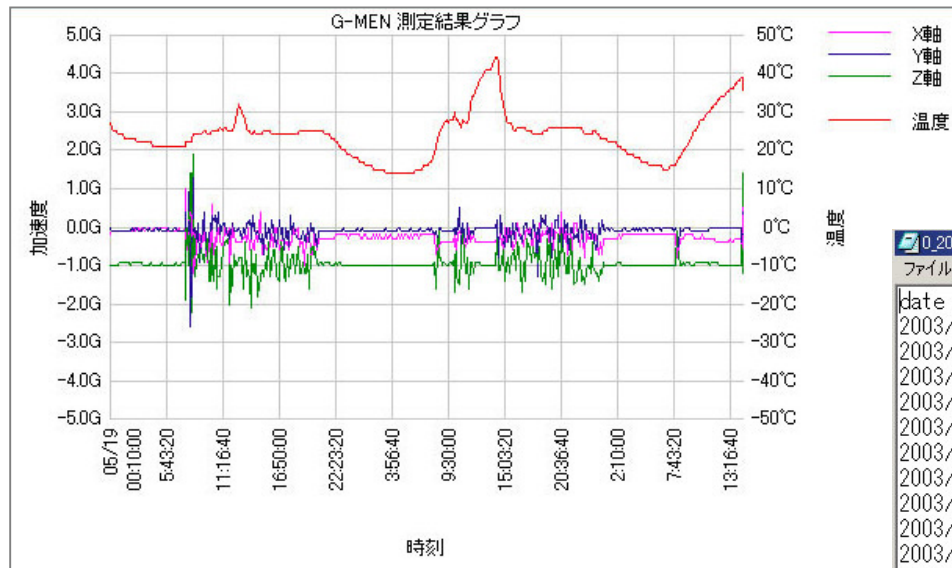
STATUS BAR



CONNECTION
STATUS

Setting
information

Product Overview - Software



Time Domain Graph Display

* English version available

Data Log Display

date	time	x	y	z	temperature
2003/05/05	09:50:00.000	-2	0	-10	25.0
2003/05/05	10:00:00.000	0	0	-11	25.0
2003/05/05	10:10:00.000	0	-1	-10	25.0
2003/05/05	10:20:00.000	0	-1	-10	26.0
2003/05/05	10:30:00.000	0	-1	-10	26.0
2003/05/05	10:40:00.000	0	-1	-10	26.0
2003/05/05	10:50:00.000	-1	-1	-10	26.0
2003/05/05	11:00:00.000	-1	0	-10	27.0
2003/05/05	11:10:00.000	-1	0	-10	27.0
2003/05/05	11:20:00.000	-1	0	-10	27.0
2003/05/05	11:30:00.000	-1	0	-10	27.0
2003/05/05	11:40:00.000	-1	0	-10	27.0
2003/05/05	11:50:00.000	-1	0	-10	27.0
2003/05/05	12:00:00.000	-1	-1	-10	27.0
2003/05/05	12:10:00.000	0	0	-10	27.0
2003/05/05	12:20:00.000	-1	0	-10	27.0
2003/05/05	12:30:00.000	-1	0	-10	27.0
2003/05/05	12:40:00.000	0	0	-10	28.0
2003/05/05	12:50:00.000	-1	0	-10	28.0
2003/05/05	13:00:00.000	-1	0	-10	28.0
2003/05/05	13:10:00.000	-1	0	-10	28.0
2003/05/05	13:20:00.000	0	0	-10	28.0

CSV Format



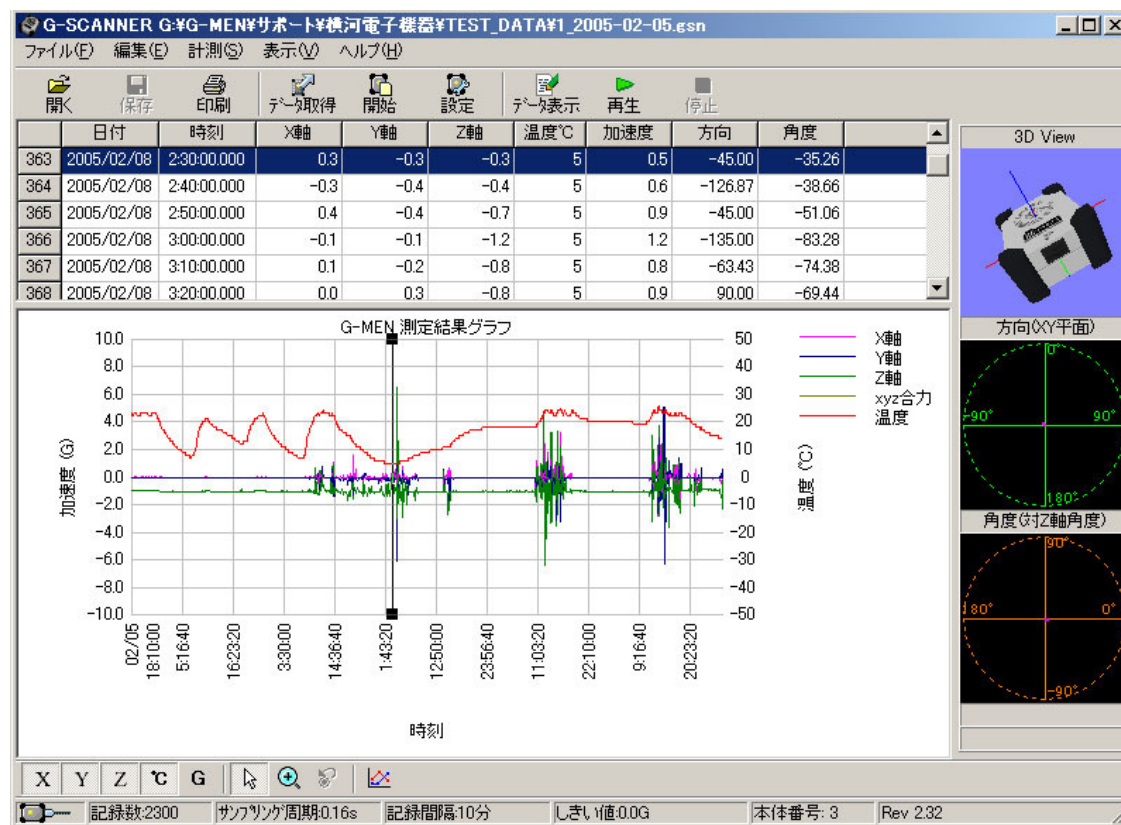
Optional Software



G- SCANNER is Enhanced software for G-MEN (Option)

Features

- 1 . Data Log Display
- 2 . 3D View Display
- 3 . Direction Display
- 4 . Angle Display
- 5 . Real Time mode
- 6 . Play back mode



* English version available

*G-MEN will change
The Distribution System!*



Contact information



- G-MEN Authorized Distributor
 - A-Walk USA Inc.
- www.a-walkusa.com

